

C

L

M

a

Founded 1966

Issue 3: November 2011

Quarterly Newsletter from the Central London Maintenance Association

Project Solver Scoop Trainee of the Year Award

27th October 2011

Steve Hubert of Project Solver receiving the Trainee of the Year award from Chairman Tim Soden



The Whitehall suite

The 2011 Annual Dinner and Trainee of the year Awards held at the Royal Horseguards Hotel was a huge success and a great celebration of all that is best about our business sector.

In the magnificent Whitehall Suite once used by the National Liberal Club as its Billiards Room, a grand opulent space with doric pillars, high ceilings and chandeliers the presentation of the award was made to Steve Hubert of Project Solver.

The evening was introduced by Vice Chairman Calvin Dobinson and handed over to the ebullient Tim Soden, Chairman of the CLMA.

Tim delivered his overview of the year gone by and his hopes for the future, reminiscent of the Queen's Christmas Day message to the nation.

The guest speaker, Mike Clarke a trustee for Brainwave, was introduced by Charity Secretary Nigel Charleston, who surely has missed his vocation and should have pursued a career as a luvvie! Mike gave an impassioned speech about Brainwave, the charity that the CLMA are proud to support.

This paved the way for the headline event of the evening, to make the award for the trainee of the year. This year although the standard was high it was a sad sign of the times that apprentice and trainee numbers have suffered. Nevertheless this did not detract from the achievement of our worthy winner, Steve Hubert and we wish him every success for his future career.

Steven Hubert, Project Solver – CLMA Trainee of the Year 2011

Steve entered college, age 19, fast tracked to the Level 2 stage of the City & Guilds 2330 as a result of his high school grades . At Level 2 he achieved four distinctions and was again fast tracked by the college to sit his Level 3, successfully finishing the course this year, four months earlier than his peers. A valuable asset to his company, Project Solver, Steve has proved his ability to supervise a team and now mentors an apprentice who is in fact older than him.



A Glorious Day at the Verulam Autumn Charity Golf Event

A glorious Indian summer's day made the autumn charity golf day a memorable one and sent everyone home with a tan.

The home of the Ryder Cup provided a stiff challenge to all competitors and the excellent green condition and pin placements were the main topic of conversation at the 19th. The Verulam golf day in St. Albans, the second of the year, had a lot to live up to following the success of the day at The Lambourne in June and it did just that, vindicating the decision to hold two such events in the year.

Hard work by the committee and co-sponsorship from recruitment consultants PRS and electrical compliance company Project Solver combined to make a memorable day.

Generous patronage during the raffle and auction ensured that the CLMA demonstrated continuing support for it's adopted charity Brainwave.

All the winners:

Individual Winner – Adrian Collyer

Winning Team – Lee Hamilton, Alan Searle, Tim James, Dave Allen

Longest Drive, Front 9 – Roger Herbert

Longest Drive, Back 9 – Lee Hamilton

Nearest The Pin, Front 9 - Mark Lye

Nearest The Pin, Back 9 - Glen Plowman



Sarah Drake and Matt Titcombe receiving a cheque on behalf of Brainwave from CLMA Charity Secretary Nigel Charleston



The winning team – (left to right) Tim Soden (Chair), Mark Oldfield (Presenting), Tim James, Calvin Dobinson (Vice Chair), Alan Searle, Dave Allen, Lee Hamilton



The Continuing Thoughts of Chairman Tim



Abridged version of the Chairman's Speech at the Annual Dinner, 2011

Good evening. In May this year the CLMA celebrates its 45th anniversary having been formed in 1966 by some far sited individuals who wanted to promote excellence by the people involved in the care and maintenance of commercial buildings.

Four years ago we were down to just 6 members.

To some this may have been a problem but I saw it as a challenge to the inevitable growing pains of an association coming to terms with an evolving business sector.

We now have over 130 members, an increase of over 100% year on year.

This year has been very busy we have:

Increased membership 3 fold.

Extended the committee with the appointment of charities and marketing secretary.

Held two golf days

Organised an open day technical event day at the Thames barrier.

Adopted the Children's Charity Brain Wave.

Revamped marketing with a new newsletter and invitations.

Created New Sponsorship Opportunities.

Revitalised the web site.

And tonight the Annual Dinner and Trainee of the year award.

All this has been made possible through a loyal and committed committee supported by sponsors without whom none of this would have been possible.

To those of you here tonight who have selflessly donated your time or business resources to make a valuable contribution I extend my sincere thanks.

Not only to you for being here but for actually putting yourself out to make a difference, you are the reason why this association is once again a force for good within the services sector.

So where to from here?

We are independent and exist to represent every individual who agrees to the principals of excellence and enjoyment in our workplace.

Next year promises to be even busier and more innovative and to make this happen my question is simple but challenging.

I ask each of you that if this association stands for what you believe in what do you want us to represent for you?

Visit our web site or join our LinkedIn group but more importantly sign up and get involved for the future well being of this industry.

A long time ago before we became swamped by cynicism about trading practices, the economic climate, political interference or regulatory reform, I decided to make a difference and those who inspired and joined with me are the committee, members, our sponsors and guests here tonight.

A business guru called Robert Townsend an Economic commentator on development and growth in third world countries once said

“If you don't do it excellently don't do it at all. Because if it's not excellent, it won't be profitable or fun and if you're not in business for fun or profit, what the hell are you doing there?”

Excellence, fun and profit how enjoyable a phrase is that?

Thanks for being here and to those guests who have not already done so I invite you to join with us to make a difference.

Start by going to www.clma.co.uk.

Thank you.

Tim Soden
Chairman



Feature - Our Adopted Charity

Brainwave is the UK's leading charity for bringing greater independence to children with disabilities and developmental delay through individual home base therapy programmes. Brainwave is innovative and dynamic working at the leading edge of what therapy can achieve. While the children on the Brainwave programme suffer from a range of conditions the most common are Cerebral Palsy, Down's Syndrome and Autism. The children are aged six months to twelve years. However, most of the children are between the ages of two and six.

Brainwave is a national Charity with centres located in Greater London (Essex), the North West (Cheshire) and South West (Somerset). We also run satellite clinics in Scotland and Ireland. Since 1982 Brainwave has helped thousands of children from every part of the country to develop life changing skills and more meaningful, happier lives.

During the last five years the number of children on the programme across the UK has doubled. There are 530 children currently on the Brainwave programme. The typical time on programme is two years but some remain for several years. Brainwave is currently reaching a small proportion of the children that it could help. Each year 27,000 children are born with, or develop, a disability in the UK. Demand is outstripping our capacity to provide services. We are keen to raise funds to have a bigger impact and our strategy is for the number of children we help to increase by 10% each year.

Brainwave is extremely grateful for all the work the **CLMA** and its members have put into our sponsorship. The **CLMA** has raised over £5,000 for the charity so far!

Brainwave's new CEO Phil Edge said *"I am really delighted Brainwave is lucky enough to be working with the **CLMA**. Thanks to all of you for your inspiring support for our work in enabling our Brainwave children to achieve their true potential"*.



Brainwave at the **BBC**

Brainwave featured on a BBC Television Lifeline appeal, on Sunday 21 August. The 9-minute programme was presented by Olly Murs, singer-songwriter who comes from Witham in Essex where the South East Centre is based, and he recently became one of the Charity's patrons. The appeal was seen by over 1.2 million people and gave Brainwave some valuable public exposure, raising new funds and increasing enquiries to all three of their therapy centres.

The BBC Lifeline Appeal video with Olly Murs can be seen at: <http://www.youtube.com/watch?v=A6pRTjyITfk>

Brainwave also appeared on a BBC local news programme in June on the visit to the Witham centre by HRH Sophie, Countess of Wessex. The video can be seen at: <http://www.bbc.co.uk/news/uk-england-essex-13716157>

Next year is Brainwave's 30th anniversary. The Charity will keep **CLMA** members informed of all its plans and activities for its special birthday year 2012.

Full details can be found at www.brainwave.org.uk

For any further information contact: Nigel Charleston, nigel@clma.co.uk or Sarah Drake, sarahdrake@brainwave.org.uk

Charity number: 1073238 & SCO39137 (Scotland)



Profile of our Adopted Charity



Declan's Story - by his mum Colette

Our son Declan was born two weeks early in December 2007.

Our Consultant was able to tell us within minutes that 'Declan may have characteristics of a child with Down Syndrome', my husband's immediate reaction 'well, he choose us'.

This set the tone for how we have perceived his Syndrome and never for a moment has it affected our love for Declan. We loved Declan immediately and although we worried about what the future held for Declan and his 16 month old sister, Anna, we took a simple view of caring for our baby and any issues that might arise for him.

Despite open heart surgery at four months old (which was very successful), Declan is now a healthy 3.5 year old boy. Declan's second and youngest sister was born when Declan was 22 months old.

The birth of our third child magnified Declan's difficulties and we began researching how we could help Declan further.

We had our first meeting with Brainwave in May 2010, when Declan was two years old. It was an inspiring and enlightening experience. From the moment we arrived at the South West Centre we were greeted with wonderful warmth and hospitality. The staff were so informative. Every question was answered with an honest evidenced based reply and we never felt fudged. The ease with which they worked with Declan was brilliant.

We received so much guidance and felt very confident with the Programme they developed for Declan. It was very comprehensive; and 90% of the content was totally new to us. To our amazement, Declan walked independently within three months of starting his Brainwave Programme. He has gained more strength and stability but most of all, his confidence and self esteem has excelled. He seems so much happier when playing with other children or in any social situation, and his coordination, concentration and focus have all improved. Our children really enjoy doing Declan's Programme.

At times we have found that fitting the Programme into our busy family has been challenging; but it is so worth the effort. The Brainwave staff have given Declan and our family great hope for the future and that is a great gift. A massive thanks to everyone who keeps the 'Brainwave' wheel turning, and to everyone there who has touched our family's life.

Natalie's Story - by her parents Lawrence and Sally

When Natalie was 9 months old we were told she had Cerebral Palsy, would never walk, talk, sit up or achieve academically. We were distraught.

We looked for options in mainstream Therapy and found Brainwave. Visiting Brainwave for the first time was a breath of fresh air and we felt as if a weight had been lifted from our shoulders. The Therapists saw Natalie as a whole child. When we were asked questions about her the information we gave was not discarded as it had been by professionals previously. The Brainwave Programme was the first time anything made any sense to us. It is made up of exercises lasting between 1 - 2 minutes, up to 25 minutes altogether.

It had been devised just for Natalie's needs. We could see the benefit of the exercises and the philosophy behind them. Brainwave gave us time and support. Everything was explained fully, demonstrated, and practiced by us. All this was videoed so we had a DVD to take away with us. After just one month we began to see terrific progress! Each time we returned for a re-assessment (about every 4 - 6 months) Natalie had progressed even more. We found it hard to believe that she would be able to cope with standing but she did - just as she did with taking her first steps, and walking independently!



It was good to have the structure of the Brainwave Programme with the timed exercises. All the targets that were set were realistic and achievable, but she was also challenged. She enjoyed the challenges and achieving goals. We felt at last that we were doing something positive to help our daughter, and what we were doing was obviously working! She made more progress in one month with Brainwave than she did in over a year with the Physiotherapist.

Natalie is now 22 years old. She underwent massive spinal surgery in 2009 before taking her place at University to do a BA Hons Degree in Animation in September 2010. She has chosen to live in halls of residence and is fiercely independent.

We always wanted to know that we tried everything for Natalie. Now we can say that we did, and we know that without the help and support of Brainwave she would not have fulfilled her potential - every child's right.



Advertisement



Project Solver



01371 878070

info@projectsolver.co.uk

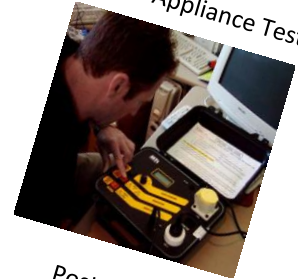
Periodic Inspection & Testing



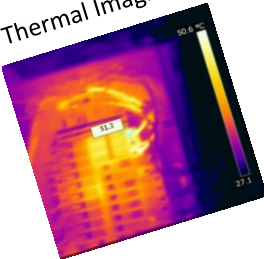
Think you're switched on?

These are testing times

Portable Appliance Testing



Thermal Imaging



Project Solver
Not a promise, a guarantee!

Post Testing Remedial Work



Pass your test with us



Sinnarji



Sinnarji enables improves awareness of individuals and teams so that delegates leave our courses empowered to bring about permanent improvements to their workplaces.

By promoting personal responsibility, ownership and flexible communication, Sinnarji training aligns the intentions people and organisations so the strategy for improvement is clear, achievable and sustainable .

Our workshops are informal good fun and most importantly enhance the cultural values and development aims of a business to deliver lasting harmonic changes.

Specialties

Business Change, Employee and Management Training

☎ 01189712024

tim@sinnarji.com

People and Organisations working together to unlock their collective potential



An Open Invitation



Meet us for Christmas drinks on Thursday 1st December
at 5.00pm



at
The Victoria, 1 Lower Belgrave St, London, SW1W 0NR



Victoria Tube Station, 0.1 miles



Key dates for your diary.

Regular Committee Meeting

Thursday 1st December 2011

Time: 15.00 hours

Venue: Hays Offices, 23 Lower Belgrave

Street, London, SW1

This meeting will be followed by a networking opportunity at

The Victoria, Lower Belgrave St. SW1 (Nr Victoria tube)

from 5pm

Contact: david@clma.co.uk

Regular Committee Meeting

January 2012 tbc

Time: 15.00 hours

Venue: Hays Offices, 23 Lower Belgrave

Street, London, SW1

This meeting will be followed by a

networking opportunity at a local hostelry.

Contact: david@clma.co.uk

New Members

The management and maintenance of commercial buildings is undergoing a period of unprecedented growth and evolutionary development due in part to the global services economy increasing social and technological demands in the work place.

The Central London Maintenance Association (CLMA) was formed in 1966 to promote excellence within all aspects of the management and care of commercial buildings assets. The Association has the merit of complete autonomy, entirely in control of its own affairs, to promote the CLMA and its member's interests on a national basis.

The CLMA is not in any sense a 'learned society' as we have no academic requirement for entry. The CLMA was formed by, and caters for, the individuals and organisations engaged in maintenance activities for engineering assets and building fabrics.

Membership of the CLMA is open to anyone within the United Kingdom having a controlling position in Maintenance and the main qualification for membership is to be a representative member for your company, business or government department involved in maintenance issues on a regular basis. Our members represent a wide range of management personnel within the private and public sectors from senior executives to managers and supervisors.

Private subscription to the CLMA is presently £39.00 per annum plus an initial registration fee of £25.00 – Total £64.00.

Company subscription to the CLMA is presently £190.00 per annum plus an initial registration fee of £50.00 – Total £240.00.

Our meetings are an opportunity for members and interested parties to net work and promote the interest of themselves and the companies that they represent. If you have a controlling position in maintenance, and you are looking for the common ground on which a friendly and informal exchange of problems, opinions and experience can be helpful, then the CLMA provides this.

If you are new to the maintenance industry and are inexperienced or just need someone to talk to on maintenance issues then we invited you to join with us.

For membership application on line follow this link; http://www.clma.co.uk/apply_new.html

Committee Members (Elected at the AGM 5th May 2011)

Tim Soden – *Chairman*
Sinnarji Training
Suite 8 Abbey Gardens
Upper Woolhampton
Reading RG7 5TZ
0118 971 2024
e-mail: tim@clma.co.uk

Calvin Dobinson – *Vice Chairman & Marketing and Media*
Project Solver Limited
Unit 7a Oak Industrial Park
Chelmsford Road
Great Dunmow
Essex CM6 1XN
01371 878070
e-mail: calvin@clma.co.uk

Malcolm Bavin – *Treasurer*
Scion Technical Services Ltd
1 Moorbrook Park
Southmead
Didcot, Oxon OX11 7HP
01235 517770
e-mail: malcolm@clma.co.uk

Ian Higgins – *Secretary*
Hays Construction and Property
Ebury Gate,
23 Lower Belgrave Street
London SW1W 0NT
020 7259 8721
e-mail: ian@clma.co.uk

Damion Lucas – *Membership Secretary*
SSA Recruitment Ltd
Unit 65
3rd Floor Evans House
107 Marsh Road
Pinner
Middlesex HA5 5PA
020 3137 5550
e-mail: damion@clma.co.uk

David Rousell – *Social Events Secretary*
Hays Construction and Property Recruitment
Ebury Gate
23 Lower Ebury Street
London SW1W 0NT
020 7259 721
e-mail: david@clma.co.uk

John Kilgannon – *Technical Events*
TRS
110 Lower Road
Belvedere
Kent DA17 6DZ
01322 449 000
e-mail: john@clma.co.uk

Nigel Charleston – *Charities Secretary*
Workplace UK Ltd
22 Conduit Street
London W1S 2XR
020 7493 8700
e-mail: nigel@clma.co.uk

Martin Mc Cormack – *Committee Member*
Integral UK Ltd
1st Floor Leo House
Railway Approach
Wallington
Surrey SM6 0DX
020 8544 3500
e-mail: martin@clma.co.uk

Nick Shackleton
Committee Member
Nationwide Filters
NFC House
Vickers Industrial Estate
Mellinshaw Lane,
Morecambe
Lancs. LA3 3EN
01524 389 713
e-mail: nick@clma.co.uk